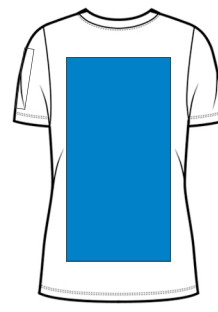
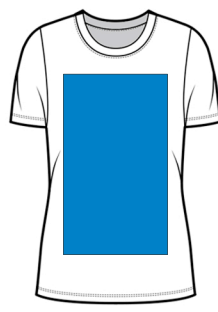


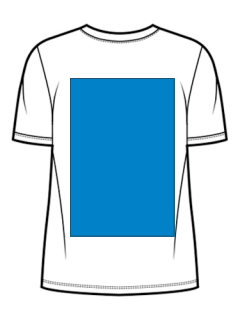
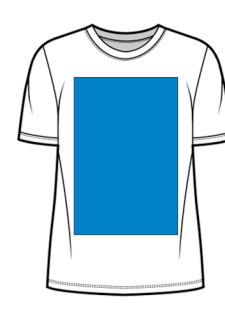
### UNISEX TEES

Up To: 36cm X 42cm



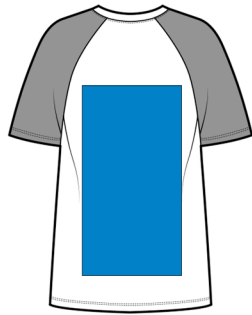
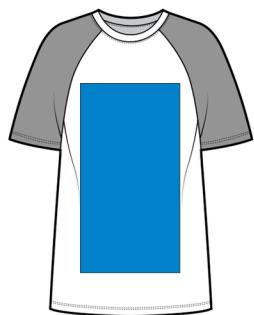
### WOMEN'S TEES

Up To: 28cm X 38cm



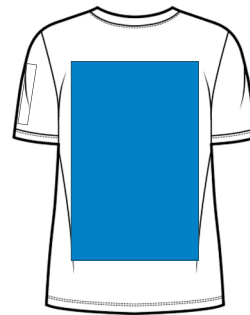
### YOUTH TEES

Up To: 28cm X 34cm



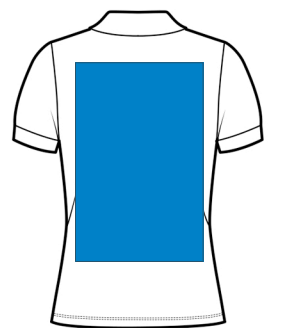
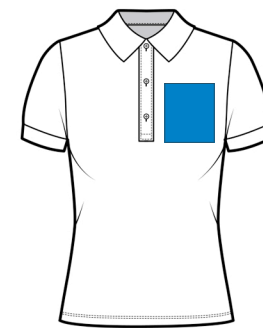
### RAGLAN TEES

Up To: 30cm X 42cm



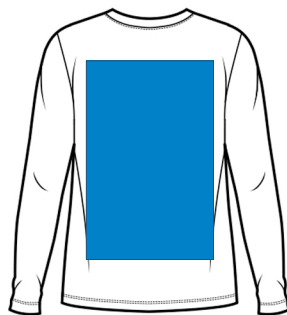
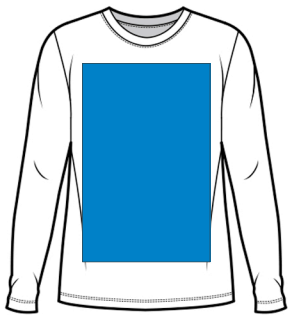
### V NECK TEES

Front: 32cm X 32cm - Back: Max Unisex



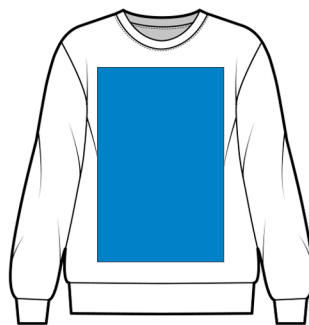
### POLO SHIRTS

Chest: 12cm X 12cm - Back: Max Unisex



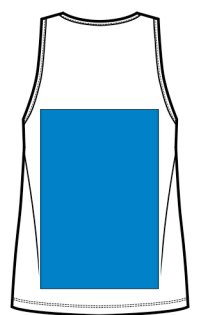
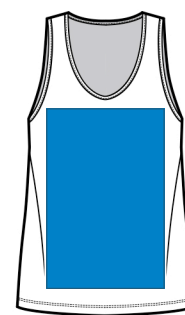
### LONG SLEEVE TEES

Up To: 36cm X 42cm



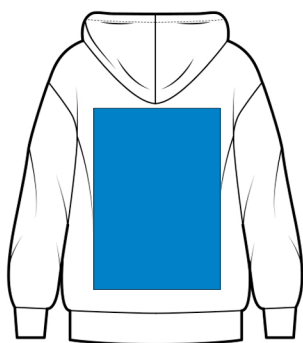
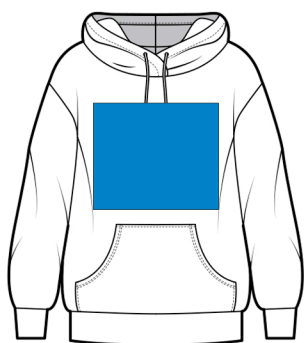
### SWEATSHIRTS

Up To: 36cm X 42cm



### VESTS

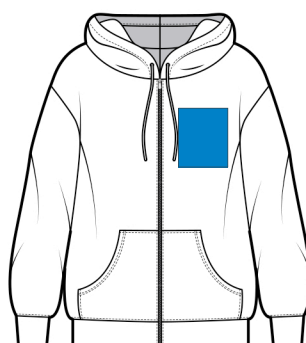
Up To: 28cm X 34cm



### PULLOVER HOODIES

Front: 36cm X 25cm - Back: Max Unisex

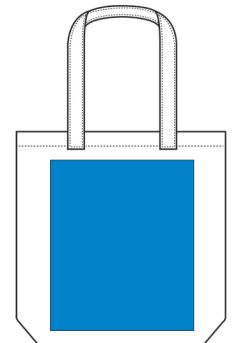
Short Sleeve - Up To: 8cm X 12cm



### ZIP HOODIES

Front: 12cm X 12cm - Back: Max Unisex

Long Sleeve - Up To: 8cm X 32cm



### TOTE BAGS

Small: 29cm X 34cm Large: 36cm X 36cm

Neck tags - Up To: 10cm X 10cm

**\*Recommended 'safe' print sizes and standard print locations. If you require something different then please let us know!**